



TargetPoint-SX

Digital Magnetic Compass

Higher performance at half the price



TargetPoint-SX is a SWaP-C drop-in replacement for the Vectronix® DMC-SX, delivering the highest magnetic compass accuracy, at half the price.

If you're looking to substantially reduce overall product cost, reduce purchasing lead-times or looking for a second source for your existing designs, our highly skilled application engineers are readily available to support you.

MEMS accelerometer technology has significantly improved in recent years thanks to the explosive volume demand for mobile phones and performance demands from the automotive industry.

PNI is the recognized leader in sensing and sensor fusion algorithms in the consumer and automotive markets. Extensive experience in these markets working with the latest inertial sensors and PNI's high sensitivity magnetic sensors led to the design of the TargetPoint-SX.

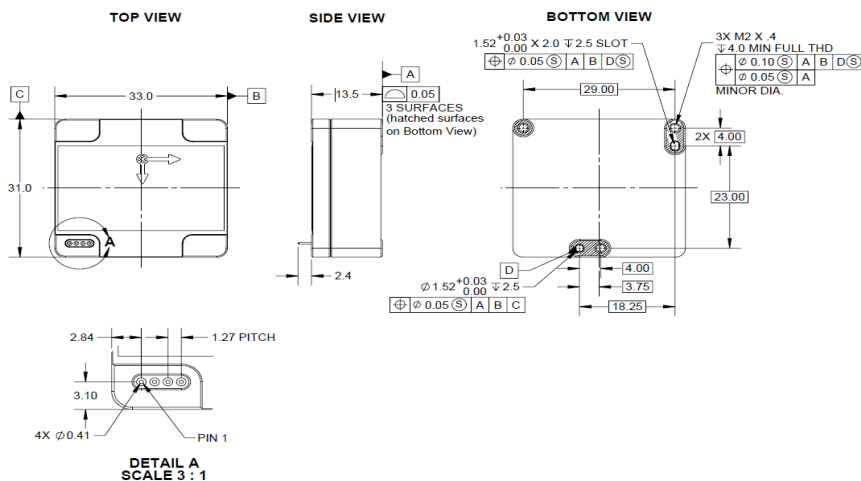
Features & Benefits

- Vectronix DMC-SX form, fit and function compatible
- 25% power consumption
- Advanced, field-proven calibration algorithms
- Designed and manufactured in the U.S.
- ITAR-free



Specifications*

Heading	Accuracy	0.25° rms
	Repeatability	0.05° rms
	Resolution	0.1°
Tilt	Range	±90° of pitch ±180° of roll
	Accuracy	0.2° rms
	Repeatability	0.05° rms
I/O Characteristics	Resolution	0.01°
	Communication Interface	Serial Port, 5V TTL
	Dimensions (l x w x h)	33 x 31 x 13.5 mm
Mechanical Characteristics	Weight	17 g
	Supply Voltage (unregulated)	4.5 – 5.5 VDC
Power Requirements	Typical Current Draw	11mA
	Maximum Sample Rate	20Hz



With over 30 years of experience, PNI is the world's foremost expert in precision location, motion tracking, and fusion of sensor systems into real-world applications.

PNI's sensors and algorithms serve as the cornerstone of successful IoT projects and other mission-critical applications where pinpoint location, accuracy, and low power consumption are essential.

Building on decades of patented sensor and algorithm development, PNI offers the industry's highest-performance geomagnetic sensor in its class, location and motion coprocessors, high-performance modules, sensor fusion algorithms, and complete sensor systems.

To learn more, please visit www.pnicorp.com.

PNI Sensor
2331 Circadian Way
Santa Rosa, CA 95407 USA
Phone: +1 707 566 2260

*Specifications are subject to change.
© 2021 PNI Sensor. All rights reserved.
TP-SX 6/9/21