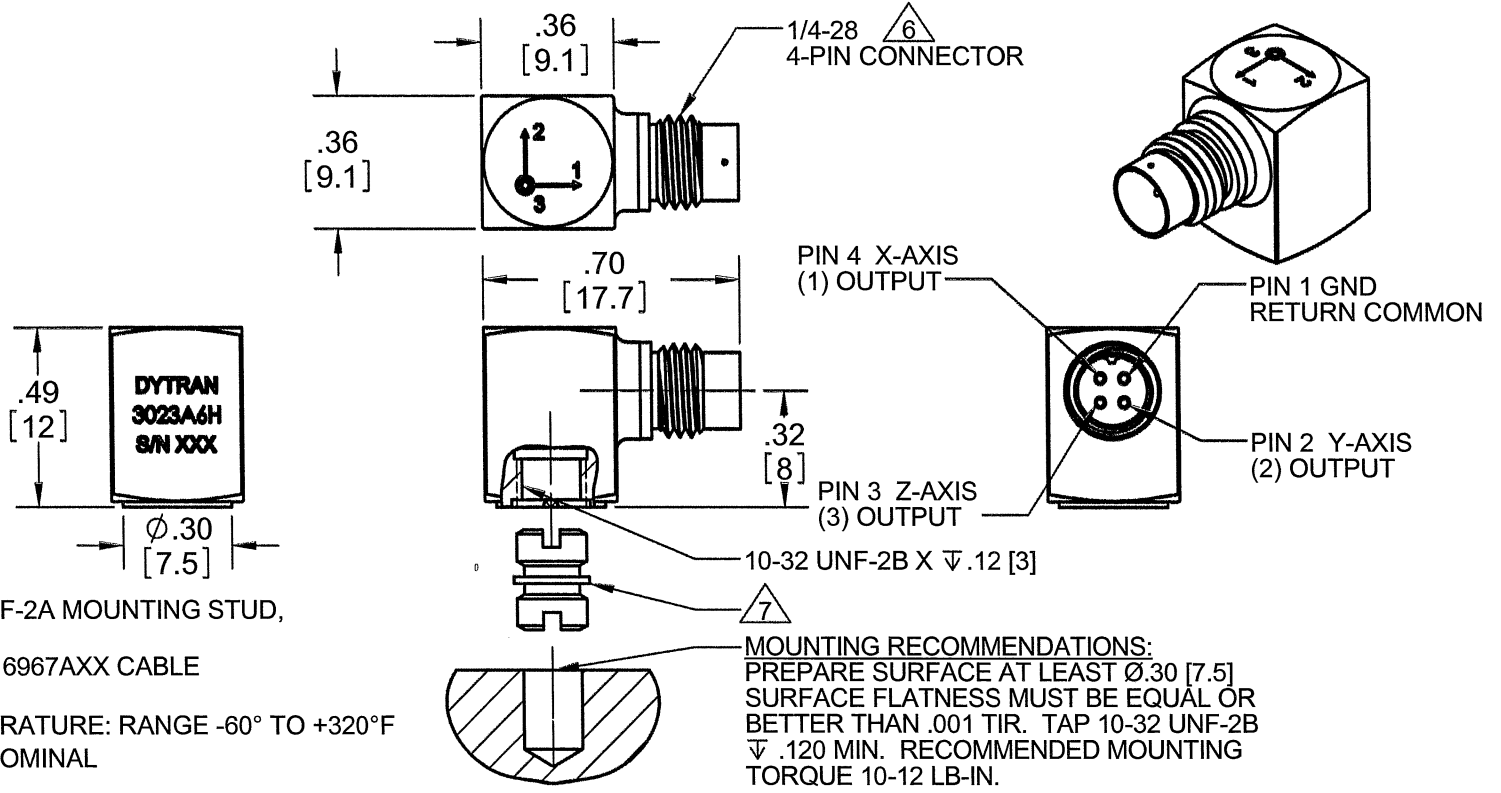


PROPRIETARY AND CONFIDENTIAL

THE INFORMATION CONTAINED IN THIS DRAWING IS THE SOLE PROPERTY OF DYTRAN INSTRUMENTS INC. ANY REPRODUCTION IN PART OR AS A WHOLE WITHOUT THE WRITTEN PERMISSION OF DYTRAN INSTRUMENTS INC. IS PROHIBITED

REVISIONS

REV.	ECN	DESCRIPTION	BY/DATE	CHK	APPR
A	7440	INITIAL RELEASE	JS 04/05/11	RS	DV



- 7 MODEL 6200, 10-32 UNF-2A MOUNTING STUD, SUPPLIED.
- 6 MATES WITH DYTRAN 6967AXX CABLE (XX=LENGTH IN FEET)
- 5. OPERATIONAL TEMPERATURE: RANGE -60° TO +320°F
- 4. SENSITIVITY: 5mV/G NOMINAL
- 3. WEIGHT: 4 GRAMS
- 2. ARROWS INDICATE ACCELERATION DIRECTION FOR POSITIVE OUTPUT
- 1. MATERIAL: TITANIUM ALLOY

NOTES: UNLESS OTHERWISE SPECIFIED.

UNLESS OTHERWISE SPECIFIED: INTERPRET DIM & TOL PER ASME Y14.5M - 1994. REMOVE BURRS. COUNTERSINK INTERNAL THDS 90° TO MAJOR DIA. CHAM EXT THDS 45° TO MINOR DIA. THD LENGTHS AND DEPTHS ARE FOR MIN FULL THDS. THDS PER MIL-S-7742. DIMENSIONS APPLY AFTER FINISHING. ALL MACHINED SURFACES. TOTAL RUNOUT WITHIN .005. BREAK SHARP EDGES .005 TO .010. MACHINED FILLET RADII .005 TO .015. WELDING SYMBOLS PER AWS A2.4. ABBREVIATIONS PER MIL-STD-12.		UNLESS OTHERWISE SPECIFIED: DIMENSIONS ARE IN INCHES. DIMENSIONS IN BRACKETS [] ARE IN MILLIMETERS TOLERANCES ARE: INCHES METRIC ANGLES .XX ± .03 X ± 0.8 ± 1° .XXX ± .010 .XX ± 0.25		CONTRACT NO.	
USED ON	NEXT ASSY	MATERIAL		APPROVALS	
APPLICATION		FINISH		ORIG	DATE
THIRD ANGLE PROJECTION USA		DO NOT SCALE DRAWING		CHK	DATE
				APP	DATE

DYTRAN
INSTRUMENTS, INC. Chatsworth, CA

TITLE: **OUTLINE/INSTALLATION
DRAWING, 3023A6H**

SIZE	CAGE CODE	DWG. NO.	REV
A	2W033	127-3023A6H	A
SCALE: NONE		SOLIDWORKS	SHEET 1 OF 1

MODEL NUMBER 3023A6H	PERFORMANCE SPECIFICATION	DOC NO. PS3023A6H
	ACCELEROMETER, TRIAXIAL, IEPE	REV G, ECN 14529, 09/24/18



- HIGH TEMPERATURE
- HERMETICALLY SEALED
- MINIATURE SIZE

PHYSICAL

	ENGLISH		SI	
Weight	0.14	oz	4.0	grams
Mounting	10-32 Tapped Hole		10-32 Tapped Hole	
Connector [1]	4-pin		4-pin	
Material, Housing / Connector	Titanium		Titanium	
Sensing Element	Quartz		Quartz	
Element Style	Shear		Shear	

PERFORMANCE

Sensitivity, -10 + 15% [2]	5	mV/g	0.51	mV/m/s ²
Range F.S. (each axis)	±1000	g	±9810	m/s ²
Frequency Response, -5/+15%	1 & 2 Axis	1.5 to 4000	Hz	1.5 to 4000
	3 Axis	1.5 to 10000	Hz	1.5 to 10000
Resonant Frequency	30	kHz	30	kHz
Broad Band Resolution	0.015	Grms	0.147	m/s ² rms
Spectral Noise	1.25Hz	0.006	Grms/√(Hz)	0.059
	10Hz	0.002	Grms/√(Hz)	0.0196
	100Hz	0.0004	Grms/√(Hz)	0.0039
	1000Hz	0.0001	Grms/√(Hz)	0.00098
	10000Hz	0.00008	Grms/√(Hz)	0.00078
Linearity [3]	1	%F.S.	1	%F.S.
Maximum Transverse Sensitivity	6	%	6	%
Signal Polarity	[5]		[5]	

ENVIRONMENTAL

Maximum Vibration	±1200	g pk	±11768	m/s ²
Maximum Shock	5000	g pk	49050	m/s ²
Temperature Range	-60 to +320	°F	-51 to +160	°C
Environmental Seal	Hermetic		Hermetic	

ELECTRICAL

Supply Current Range [4]	2 to 20	mA	2 to 20	mA
Compliance Voltage Range	+18 to +30	VDC	+18 to +30	VDC
Output Impedance, Typ.	100	Ω	100	Ω
Output Bias Voltage	7 to 11	VDC	7 to 11	VDC
Discharge Time Constant	0.3 to 1.5	Sec	0.3 to 1.5	Sec
Electrical Isolation	Case Grounded	GΩ,min	Case Grounded	GΩ,min

This family also includes:

Model	Sensitivity (mV/g)	Range (Gpeak)	Resolution (Grms)	Oper. Temp(°F)	TC

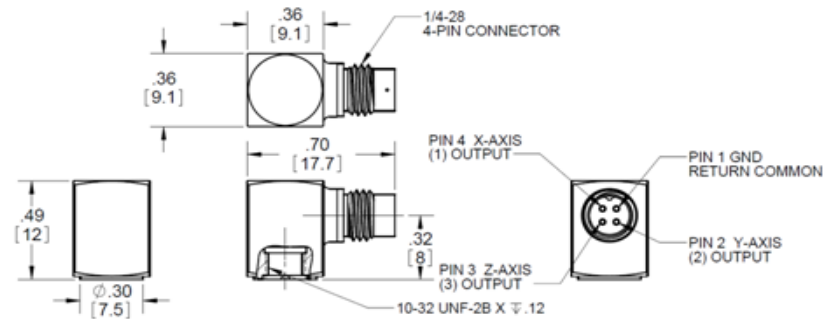
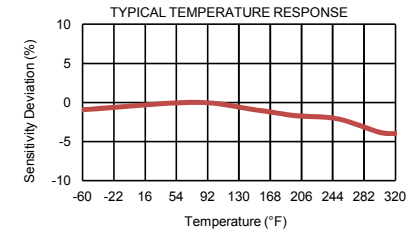
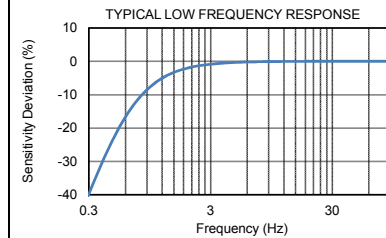
Refer to the performance specifications of the products in this family for detailed description

Supplied Accessories:

- 1) Accredited Calibration Certificate (ISO 17025)
- 2) Model 6200 Mounting Stud, Qty 1.

Notes:

- [1] Connector mates with Dytran's cable assy. Model 6967AXX. (xx = length in feet)
- [2] Measured At 100 Hz, 1 Grms per ISA RP 37.2
- [3] Measured using zero-based best straight-line method, % of F.S. or any lesser range.
- [4] Do not apply power to this system without current limiting, 20 mA MAX. To do so will destroy the amplifier.
- [5] Positive for motion in direction of arrows on housing.
- [6] In the interest of constant product improvement, we reserve the right to change the specification without notice.



Units on the line drawing are in inches, units in brackets are in millimeters. Refer to 127-3023A6H for more information.

